

# CAPABILITY STATEMENT

DYNAMIC  
Steel Frame





**Dynamic Steel Frame is Victoria's leading independent light gauge steel framing manufacturer and recognised globally as a leader in the field. Manufacturing for all segments of the building industry including commercial, residential, medium density, modular, social housing, bespoke homes, façades, and even tiny houses.**

**Using the most advanced steel framing system available in the world today to produce wall frames, roof trusses, floor joists, facades, balustrades and more to project sites all over Victoria and beyond. Builders appreciate the BIM / Digital Twin approach to design.**

**Enabling the designs to be ironed out before manufacture, resulting in reduced rework on site, fewer trades and faster erection times.**

**Dynamic Steel Frame prides itself on impeccable, robust and fully compliant designs, customer service and industry knowledge. Creating complex award-winning designs using innovative, cutting-edge technologies, the company has driven industry development and played a major role in the evolution of consumer embracement of using light gauge steel in the building process.**

**Proudly Australian owned, supplied and manufactured, Dynamic Steel Frame is providing a Lighter. Straighter. Better. way to build.**



**100% AUSTRALIAN OWNED  
100% AUSTRALIAN MANUFACTURED  
100% AUSTRALIAN Truecore STEEL**

# CORES VALUES

## Quality is our main competitive advantage



- The requirements and expectations of our customers must be satisfied
- Quality management is integrated into all our business processes
- Management is responsible and accountable for quality performance
- Quality performance must be assured throughout the supply chain system
- Excellence in quality management is necessary for successful business results

## Health - continuously improving performance towards zero accidents



- Providing a safe working environment for all employees, contractors, suppliers & customers
- Promote good health and safety practice within the company
- Ensuring employees have a clear understanding of their responsibilities & accountabilities
- Evaluate the risks associated in every aspect of our activities & strive to minimise them
- Promote health & safety operational excellence through communication & safety awareness

## Safety - nothing is more important than the health & safety of everyone who works for us



- All injuries and work-related illness can and must be prevented
- Management is responsible & accountable for the company's performance health & safety
- Working safely is a condition of employment
- Excellence in health & safety supports excellent business results
- Health & safety must be integrated into all business management processes

## Environment



- Minimising the environmental impact of our operations
- Making the most efficient use of natural resources & energy
- Integrating environmental management with all business processes
- Ensuring employees have a clear understanding of their responsibilities & accountabilities

---

**“We turn architectural intent into structural reality”**

- Peter Blythe, Managing Director



# DYNAMIC STEEL FRAME

---

## Industries Serviced

- Residential
- Multi-residential
- Aged care
- Modular
- Off-site
- Childcare
- Fast food
- Institutional
- Commercial

## Products & Services

- Light gauge steel framing
- Facades
- Balustrades - straight & curved
- Trusses
- Wall frame
- Floor cassettes
- Floor joists
- Integrated structural steel
- Consulting
- Engineering

## Awards

---



### 2016

National Steel Excellence Award  
Winner for Steel Excellence  
Buildings - Small Projects - No. 9  
Apartments

### 2016

ASI VIC & TAS Steel Excellence  
Buildings - Small Projects - No. 9  
Apartments

### 2020

Victorian Steel Excellence Award  
Winner for Steel Clad Structures -  
Morwell Gov-Hub

### 2022

Victorian Steel Excellence Award  
Winner for Innovative Cold Form Steel  
Buildings - Grattan Street Facade

### 2024

ASI VIC & TAS Australian Steel Excellence Award  
Winner for Innovative Cold Form Steel Buildings -  
KFC Dandenong





## Memberships

---





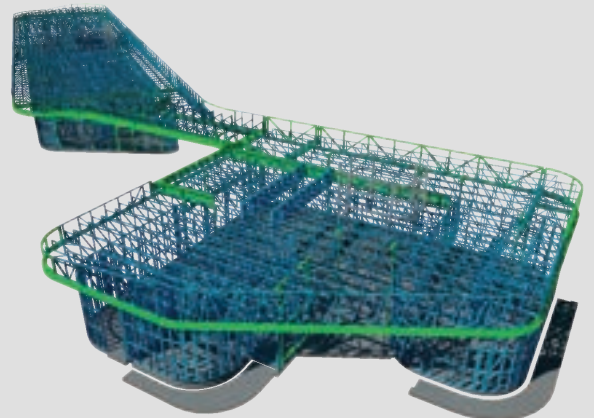
# DYNAMIC STEEL FRAME STRUCTURAL DRAWINGS

*Dynamic Steel Frame provides an elegant structural solution by removing heavy structural elements and replacing with innovative Light Gauge Steel.*

---

## Software Used

- FrameCAD Structure
- FrameCAD Detailer
- Autodesk Advanced Steel
- Revit
- Trimble Connect
- Sketchup



# STRUCTURAL STEEL SOLUTIONS

Structural steel is often required in our projects and forms an integral part of the stability of a building. By incorporating Dynamic Steel Frame's structural steel solutions alongside our sturdy TRUECORE® framing, you're ensuring unmatched optimisation, integration and durability.

We offer a comprehensive range of structural steel services tailored to meet the specific needs of your project, to work alongside Dynamic Steel Frames' light gauge steel framing.

- **Custom Fabrication:** We provide custom steel fabrication services to ensure that every component fits perfectly within your design specifications.
- **In-House Welding:** Our in-house welding capabilities allows us to maintain strict quality control while speeding up the production process.
- **Engineering Support:** We work closely with a team of experienced engineers to develop structural steel solutions that meet both your aesthetic and functional goals.





# PROJECTS

---



**Pryor Street, Eltham**



**Morwell Gov Hub**



**Bowlers Ave, Geelong**



**209 Chapel Rd, Keysborough**

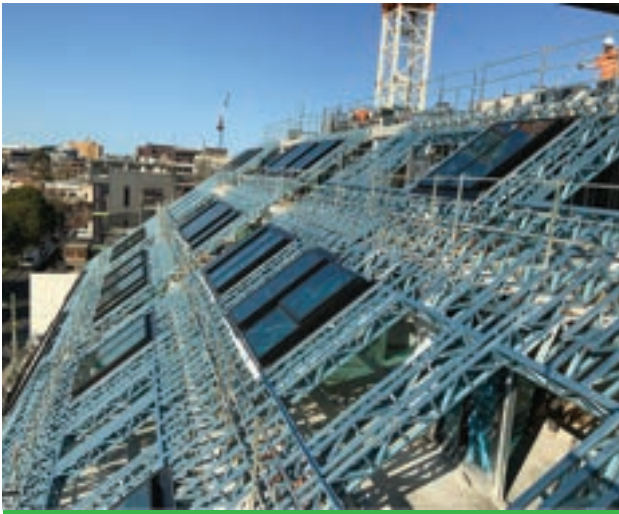


**Tourello Ave, Hawthorn East**



**St Georges Rd, Fitzroy North**





**Grattan St, Prahran**



**Alvina St, Oakleigh**



**Nuville Ct, Mt Eliza**



**Oakover Rd, Preston**



**Dark Parade, Sorrento**



**Neville St, Bentleigh**



# CORE COMPETENCIES

**Detailing optimisation and manufacture of light gauge steel framing using Australian made steel.**

**Commercial, modular, townhouse, light industrial, low-cost housing, high- end bespoke homes, apartment multi-residential, owner builder, cladding and facade builders & tiny House.**

## **Machines Operating**

- 4 x 89 mm
- 3 x 75 mm
- 1 x 140 mm
- 1 x 200-350mm

## **Steel Gauges**

- 0.75 - 1.6 mm
- 1.2 - 2.4 mm

# Dynamic Steel Frame

As Melbourne's leading provider of Light Gauge Steel framing, your project will begin with the most durable, precise foundation possible. Our dedicated team pride themselves on the service we provide our customers. We work closely with clients to guarantee a quality build & overcome any project challenges that may arise.

Transparency and communication is crucial to ensure all parties are accross each process from the quoting stage, up to delivery of your frames to site. With Dynamic Steel Frame, you can rest assured you're recieving the most advanced steel framing system available in the world today.

Our combination of design and engineering software together with our state-of-the-art machinery produce frames in the most efficient way possible. We use TRUECORE® steel which features one of the highest strength to weight ratios of any building product.

If you require high quality, efficient and reliable delivery of prefabricated light gauge steel frames, choose the team at Dynamic, for all your building needs.

The buildings we create inspire us, reflect who we are as a society, and stand tall against everything we throw at them. They protect us against the elements, hold us up, and we admire their beauty and strength. When you work in the construction industry, you see evidence of your job every day, from the site you worked on last week, to the project you're hoping to get next month. You're out there, creating something, each and every single day.  
It's our favorite part of being in this industry.



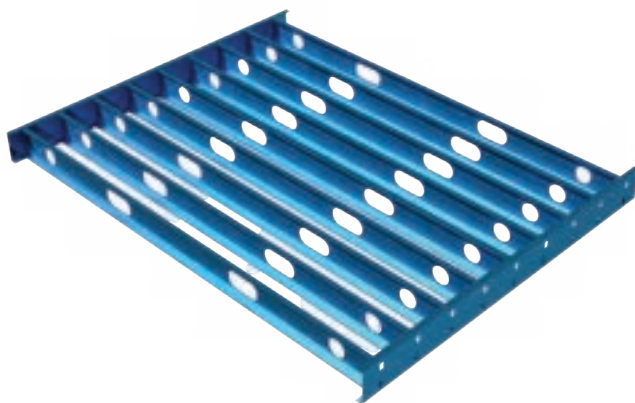


# HYPERSPAN<sup>TM</sup>

**Hyperspan is a revolutionary new addition to the steel fabrication sector. This ultra-lightweight Dynamic Steel Frame product is specially engineered to replace heavy structural steel elements.**

Our flooring system is both lightweight and high strength and can be used on both ground and multi-level floors of commercial and residential builds.

Hyperspan is quick and easy to install reducing onsite labour costs and is customisable for each individual project with spans of up to 7.5 meters long. Serving as the longest spanning system in Victoria.



This lightweight system is the perfect replacement for bulky structural steel. Its sturdy composition reduces the demand for large volumes of structural steel commonly used in commercial and residential projects.

Manufactured with flared pre-punched service holes that allow for services including plumbing and electrical to be installed without modifications or damages from sharp edges.







# DYNAMIC Steel Frame

(03) 9701 7342

[dynamicsteelframe.com.au](http://dynamicsteelframe.com.au)

34-36 Evolution Drive Dandenong South, VIC 3175

[Sales@dynamicsteelframe.com.au](mailto:Sales@dynamicsteelframe.com.au)

Accurate as of May 2025

FOR SAFETY FIRST  
STOOP TO GET HOME SAFE  
TRUMP GROUP'S HIGHEST VALUE  
Trevor Group