

CAPABILITY STATEMENT



DYNAMIC
Steel Frame

COMPANY DETAILS

Address: 34-36 Evolution Drive,
Dandenong South,
VIC, 3175, Australia

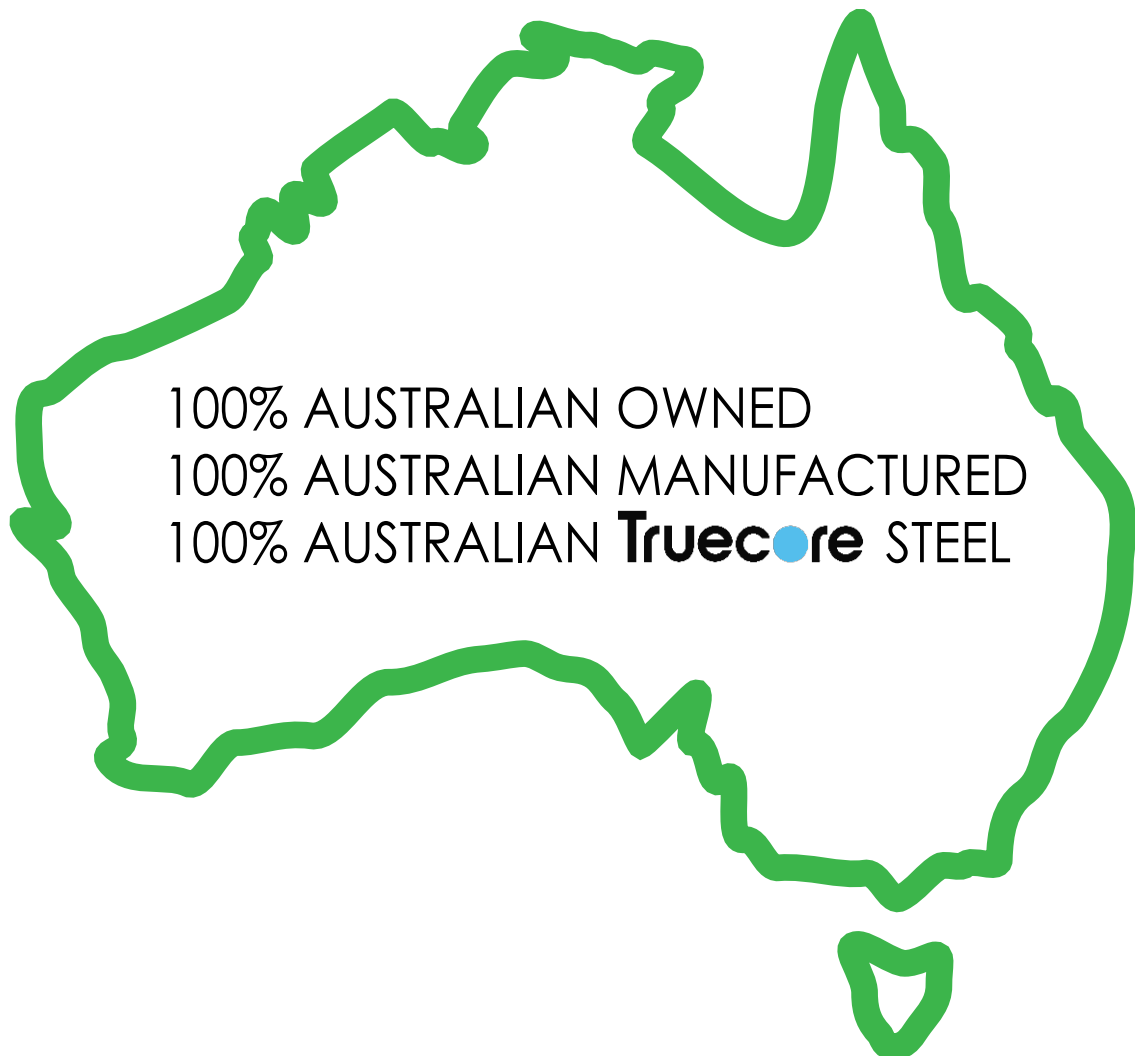
Ph: 03 9701 7342

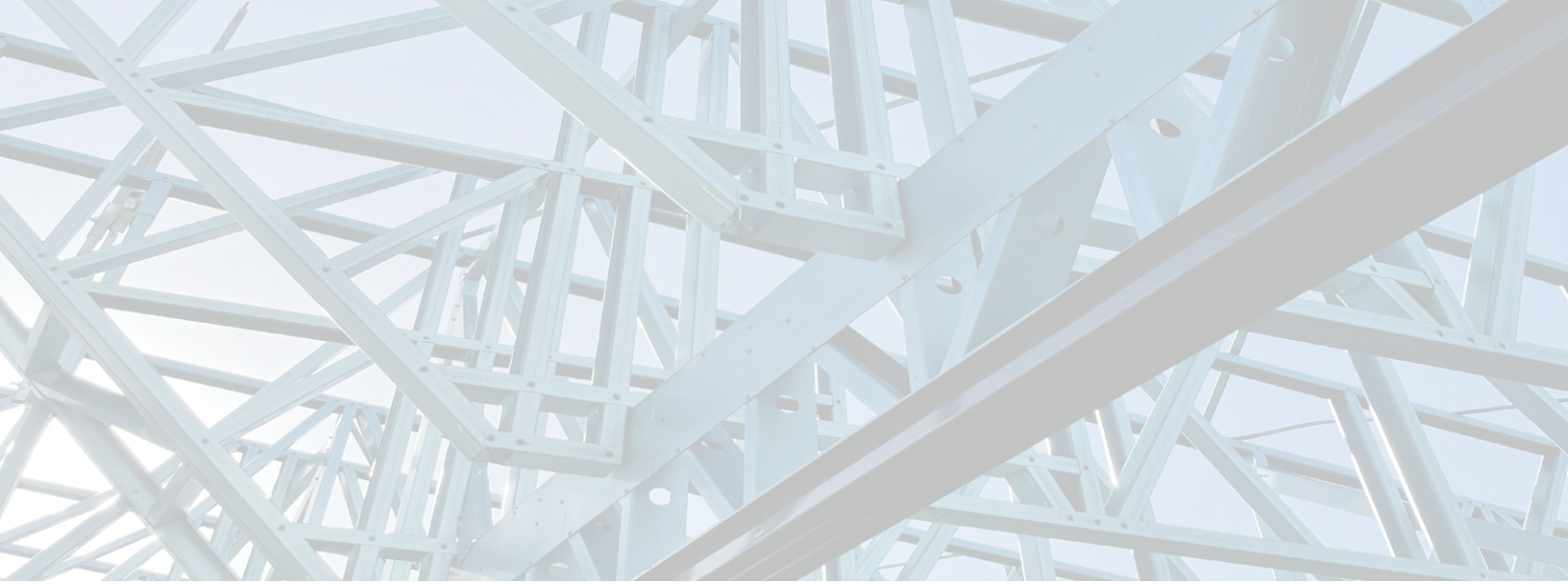
Email: sales@dynamicsteelframe.com.au

Website: dynamicsteelframe.com.au

Employees: 40-60

ABN: 34 619 284 641





Dynamic Steel Frame is Victoria's leading independent light gauge steel framing manufacturer and recognised globally as a leader in the field. Manufacturing for all segments of the building industry including commercial, residential, medium density, modular, social housing, bespoke homes, façades, and even tiny houses.

Using the most advanced steel framing system available in the world today to produce wall frames, roof trusses, floor joists, facades, balustrades and more to project sites all over Victoria and beyond. Builders appreciate the BIM / Digital Twin approach to design. Enabling the designs to be ironed out before manufacture, resulting in reduced rework on site, fewer trades and faster erection times.

Dynamic Steel Frame prides itself on impeccable, robust and fully compliant designs, customer service and industry knowledge. Creating complex award-winning designs using innovative, cutting-edge technologies, the company has driven industry development and played a major role in the evolution of consumer embracement of using light gauge steel in the building process.

Proudly Australian owned, supplied and manufactured, Dynamic Steel Frame is providing a Lighter. Straighter. Better. way to build.



**LIGHTER.
STRAIGHTER.
BETTER.**

CORES VALUES

Quality is our main competitive advantage



- The requirements and expectations of our customers must be satisfied
- Quality management is integrated into all our business processes
- Management is responsible and accountable for quality performance
- Quality performance must be assured throughout the supply chain system
- Excellence in quality management is necessary for successful business results

Health - continuously improving performance towards zero accidents



- Providing a safe working environment for all employees, contractors, suppliers & customers
- Promote good health and safety practice within the company
- Ensuring employees have a clear understanding of their responsibilities & accountabilities
- Evaluate the risks associated in every aspect of our activities & strive to minimise them
- Promote health & safety operational excellence through communication & safety awareness

Safety - nothing is more important than the health & safety of everyone who works for us



- All injuries and work-related illness can and must be prevented
- Management is responsible & accountable for the company's performance health & safety
- Working safely is a condition of employment
- Excellence in health & safety supports excellent business results
- Health & safety must be integrated into all business management processes

Environment



- Minimising the environmental impact of our operations
- Making the most efficient use of natural resources & energy
- Integrating environmental management with all business processes
- Ensuring employees have a clear understanding of their responsibilities & accountabilities

“We turn architectural intent into structural reality”

- Peter Blythe, Managing Director



DYNAMIC STEEL FRAME

Industries Serviced

- Residential
- Multi-residential
- Aged care
- Modular
- Off-site
- Childcare
- Fast food
- Institutional
- Commercial

Products & Services

- Light gauge steel framing
- Facades
- Balustrades - straight & curved
- Trusses
- Wall frame
- Floor cassettes
- Floor joists
- Integrated structural steel
- Consulting
- Engineering

Awards



AUSTRALIAN STEEL INSTITUTE

2016

National Steel Excellence Award Winner for Steel Excellence Buildings - Small Projects - No. 9 Apartments

2016

ASI VIC & TAS Steel Excellence Buildings - Small Projects - No. 9 Apartments

2020

Victorian Steel Excellence Award Winner for Steel Clad Structures - Morwell Gov-Hub

2022

Victorian Steel Excellence Award Winner for Innovative Cold Form Steel Buildings - Grattan Street Facade



Memberships

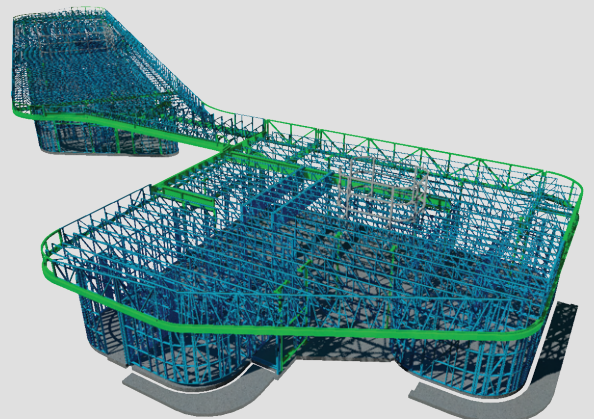
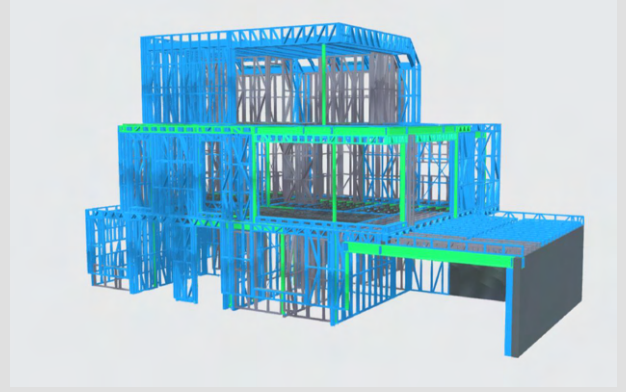


DYNAMIC STEEL FRAME STRUCTURAL DRAWINGS

Dynamic Steel Frame provides an elegant structural solution by removing heavy structural elements and replacing with innovative Light Gauge Steel.

Software Used

- FrameCAD Structure
- FrameCAD Detailer
- Autodesk Advanced Steel
- Revit
- Trimble Connect
- Sketchup



PROJECTS



Pryor Street, Eltham



Morwell Gov Hub



Bowlers Ave, Geelong



209 Chapel Rd, Keysborough



Tourello Ave, Hawthorn East



St Georges Rd, Fitzroy North



Grattan St, Prahran



Alvina St, Oakleigh



Nuville Ct, Mt Eliza



Oakover Rd, Preston



Dark Parade, Sorrento



Neville St, Bentleigh

CORE COMPETENCIES

Detailing optimisation and manufacture of light gauge steel framing using Australian made steel.

Commercial, modular, townhouse, light industrial, low-cost housing, high- end bespoke homes, apartment multi-residential, owner builder, cladding and facade builders & tiny House.

Machines Operating

- 4 x 89 mm
- 3 x 75 mm
- 1 x 140 mm
- 1 x 200-350mm

Steel Gauges

- 0.75 - 1.6 mm
- 1.2 - 2.4 mm

Dynamic Steel Frame

As Melbourne's leading provider of Light Gauge Steel framing, your project will begin with the most durable, precise foundation possible. Our dedicated team pride themselves on the service we provide our customers. We work closely with clients to guarantee a quality build & overcome any project challenges that may arise.

Transparency and communication is crucial to ensure all parties are accross each process from the quoting stage, up to delivery of your frames to site. With Dynamic Steel Frame, you can rest assured you're recieving the most advanced steel framing system available in the world today.

Our combination of design and engineering software together with our state-of-the-art machinery produce frames in the most efficient way possible. We use TRUECORE® steel which features one of the highest strength to weight ratios of any building product.

If you require high quality, efficient and reliable delivery of prefabricated light gauge steel frames, choose the team at Dynamic, for all your building needs.

**The buildings we create inspire us, reflect who we are as a society, and stand tall against everything we throw at them. They protect us against the elements, hold us up, and we admire their beauty and strength. When you work in the construction industry, you see evidence of your job every day, from the site you worked on last week, to the project you're hoping to get next month. You're out there, creating something, each and every single day.
It's our favorite part of being in this industry.**

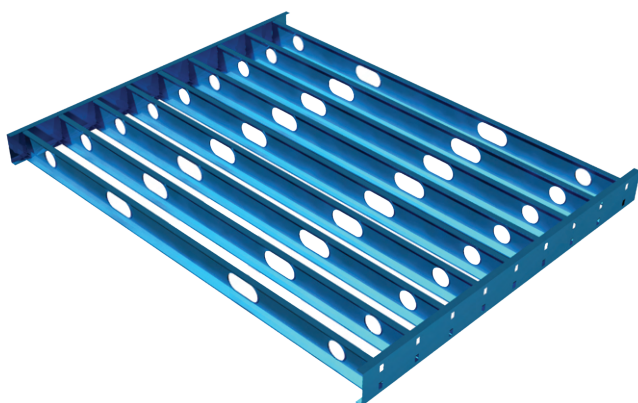


HYPERSPANTM

Hyperspan is a revolutionary new addition to the steel fabrication sector. This ultra-lightweight Dynamic Steel Frame product is specially engineered to replace heavy structural steel elements.

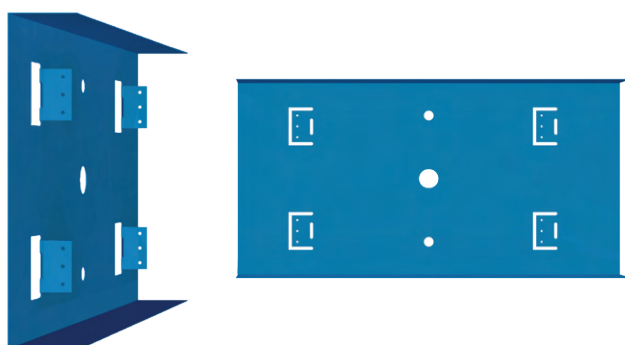
Our flooring system is both lightweight and high strength and can be used on both ground and multi-level floors of commercial and residential builds.

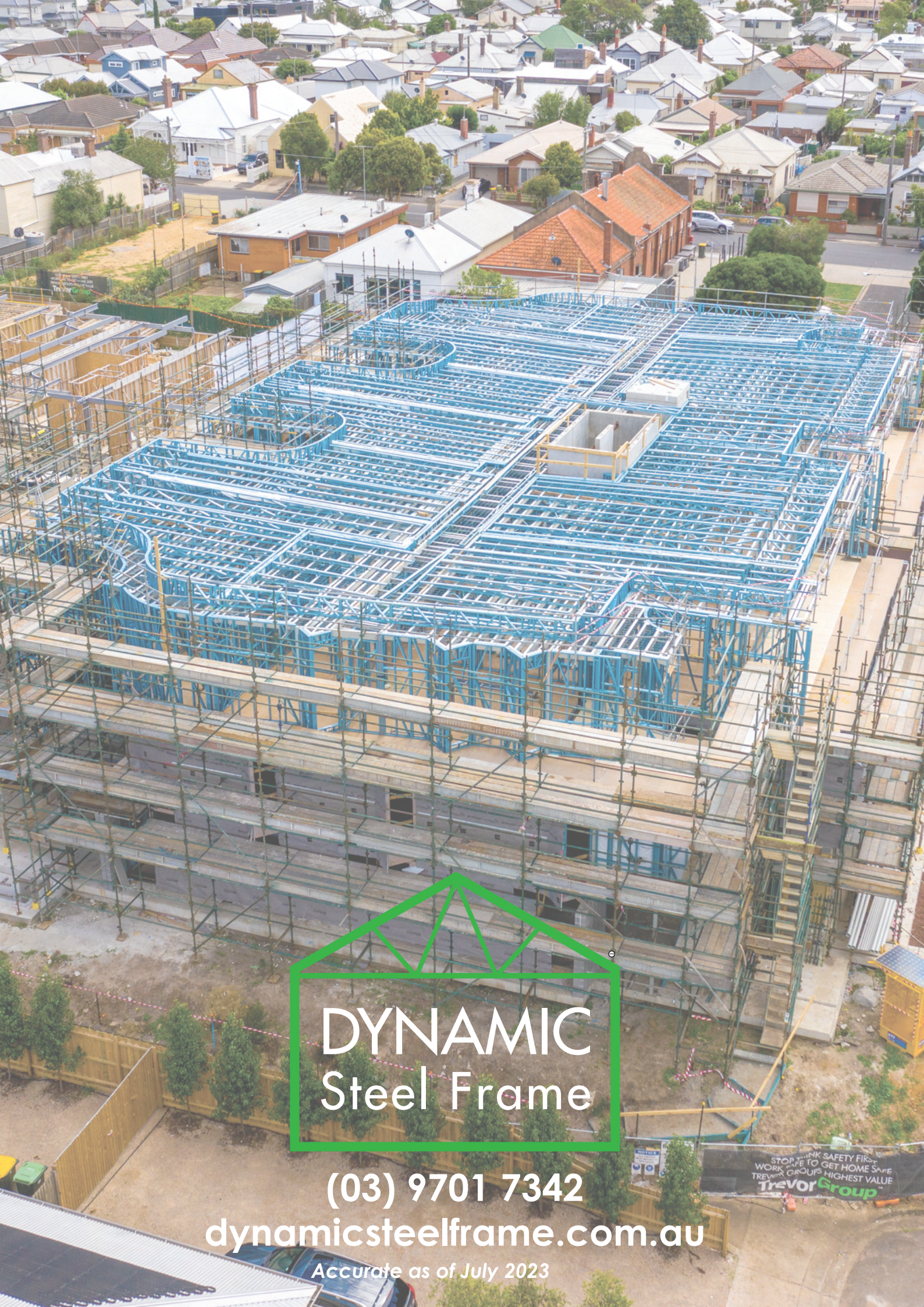
Hyperspan is quick and easy to install reducing onsite labour costs and is customisable for each individual project with spans of up to 7.5 meters long. Serving as the longest spanning system in Victoria.



This lightweight system is the perfect replacement for bulky structural steel. Its sturdy composition reduces the demand for large volumes of structural steel commonly used in commercial and residential projects.

Manufactured with flared pre-punched service holes that allow for services including plumbing and electrical to be installed without modifications or damages from sharp edges.





DYNAMIC Steel Frame

(03) 9701 7342

dynamicsteelframe.com.au

Accurate as of July 2023

STOP THINK SAFETY FIRST
WORK SAFE TO GET HOME SAFE
TREVOR GROUPS HIGHEST VALUE
Trevor Group