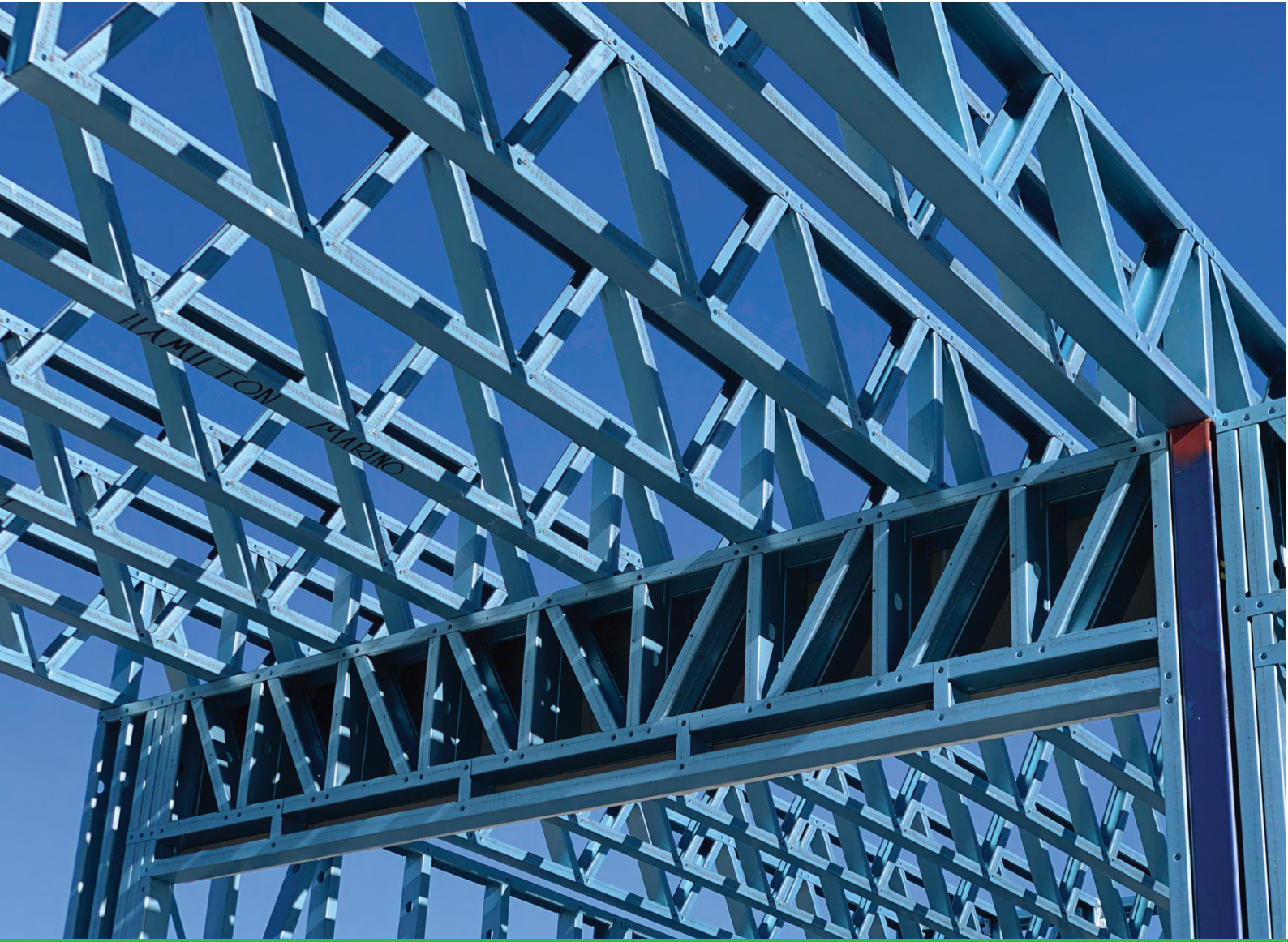




DYNAMIC Steel Frame

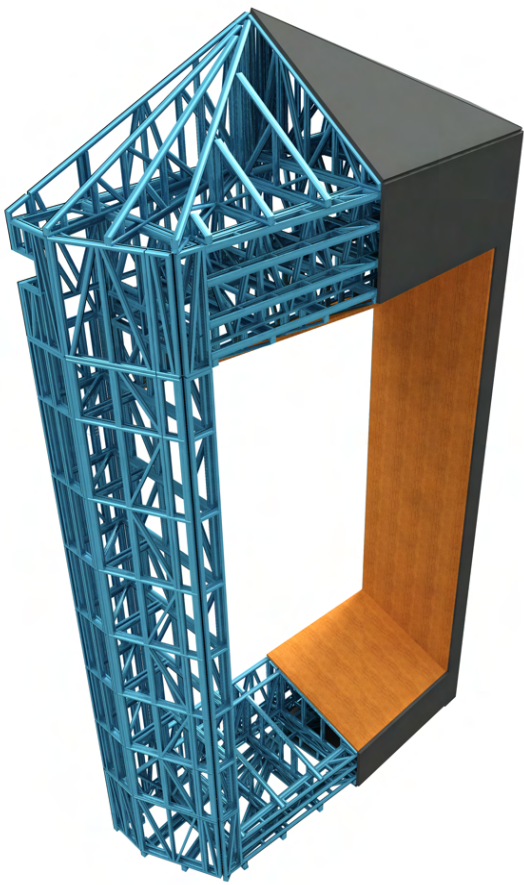
LIGHTER. STRAIGHTER. BETTER.



USING QUALITY TRUECORE® STEEL



Truecore
THE INNER STRENGTH



AUSTRALIAN STEEL INSTITUTE

AWARD WINNING FACADE MORWELL GOVERNMENT HUB



**UNSURPASSED
QUALITY
PROUDLY
AUSTRALIAN
SPEED &
PRECISION**

Dynamic Steel Frame is the largest supplier of light guage steel frames in Melbourne.

We design, prefabricate and deliver wall frames, roof trusses, floor joists, facades, balustrades, tiny houses and more to project sites all over Victoria and beyond.

Liasing closely with Architechts, Engineers, Detailers and Builders, we provide highly effective and efficient Light Gauge Steel Frames.

No project is too big or too small!

**If you can imagine it,
we can build it.**

PROJECTS



Grattan Street, Prahan



Edgewater Blvd, Maribyrnong



Vida St, Aberfeldie



Abbott St, Sandringham



Chapel Rd, Keysborough



Brightly Blvd, Truganina

Our Commitment

Quality is one of our core values to create standards for our communities and benchmarks in the market. We are committed to achieve ever increasing levels of customer expectations through continual improvements in the quality of our products and services.

We Achieve Total Commitment By:

- Delivering products to customers with high quality on time, every time.
- Institutionalising a culture of "Getting it right, the first time".
- Providing compelling solutions to ensure that our customers succeed.
- Continually updating our technical competence.
- Enhancing the expertise of our employee's through periodic training.
- Continually reviewing and upgrading our systems, policies and procedures.
- Creating an work environment which encourages team effort and where everyone's contribution is recognised and valued



Pryor Street, Eltham



McCormick Rise, Cranbourne



St Georges Rd, Fitzroy North



Bowlers Ave, Geelong



Morwell Gov Hub



Cheltenham Rd, Keysborough



**LIGHTER.
STRAIGHTER.
BETTER.**

34-36 Evolution Drive,
Dandenong South, VIC, 3175
AUSTRALIA

Email: sales@dynamicsteelframe.com.au

Ph: (03) 9701 7342

www.dynamicsteelframe.com.au